

# MEDICAL CENTRE COMMEWIJNE 2009

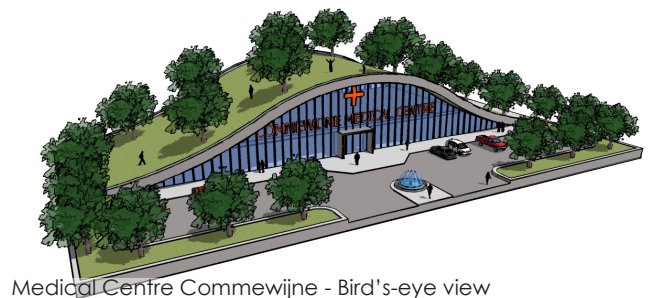
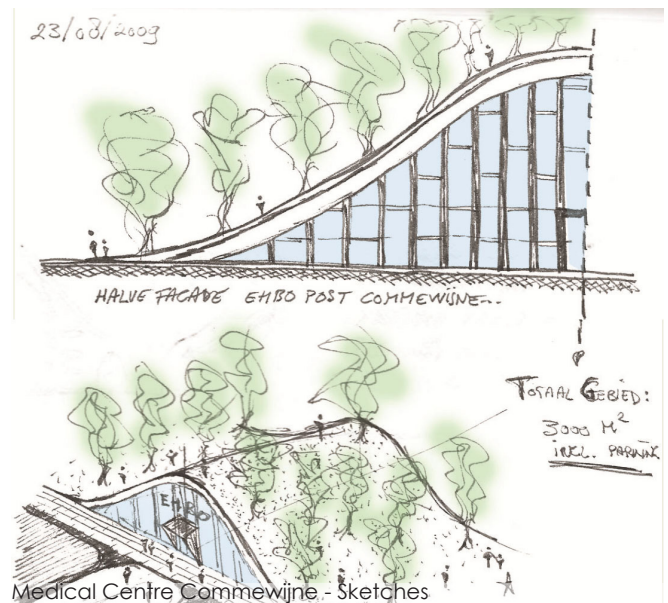


## MEDICAL CENTRE COMMEWIJNE

Project code: ZL-012  
Project name: MC Commewijne  
Location: Surinam  
Gross area: 1837,5 m<sup>2</sup>  
Period: 2009  
Budget: € 2.500.000,-  
Status: Competition

The Commewijne medical centre will consist out of two separate primary functions that will need to function independently from each other. These two functions however do need to be linked logistically and functionally.

One primary function is an Emergency Medical Care Centre that will need to function round the clock non-stop. The second primary function is health centre that will be opened only during office and medical practice hours.

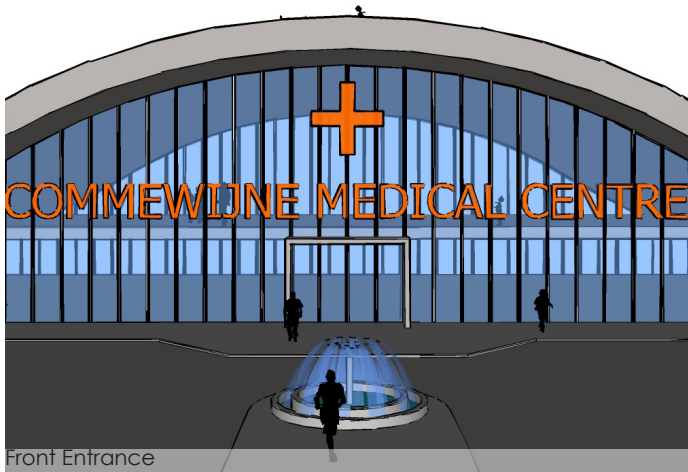


Office address:  
Delfseplein 36 | unit 1.03  
3013AA Rotterdam  
The Netherlands

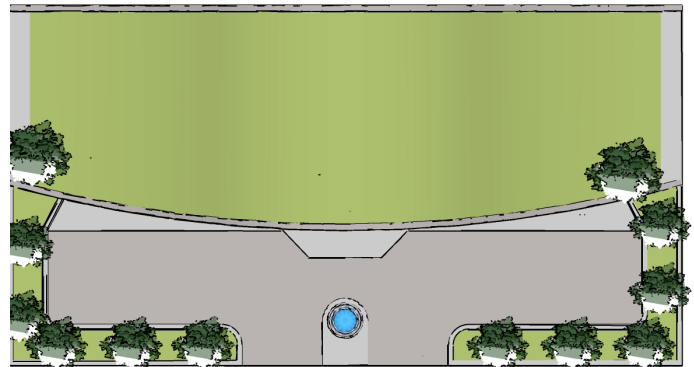
Email:  
[info@zerologic.nl](mailto:info@zerologic.nl)

Phone:  
+31 (070) 5001081  
+31 (0) 615626571

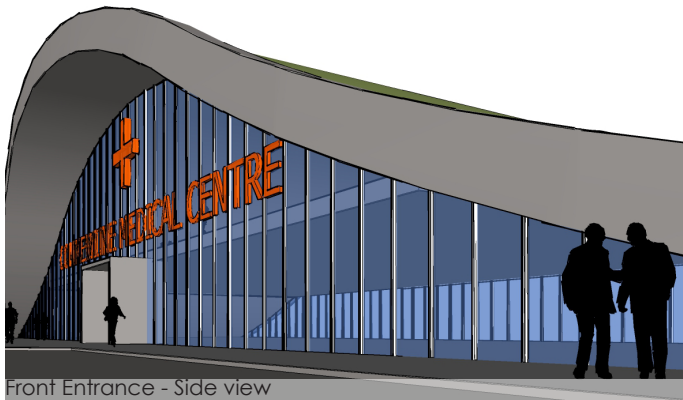




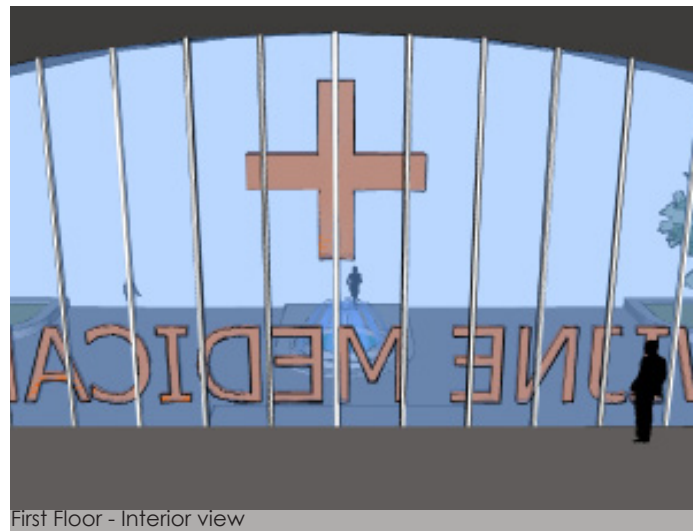
Front Entrance



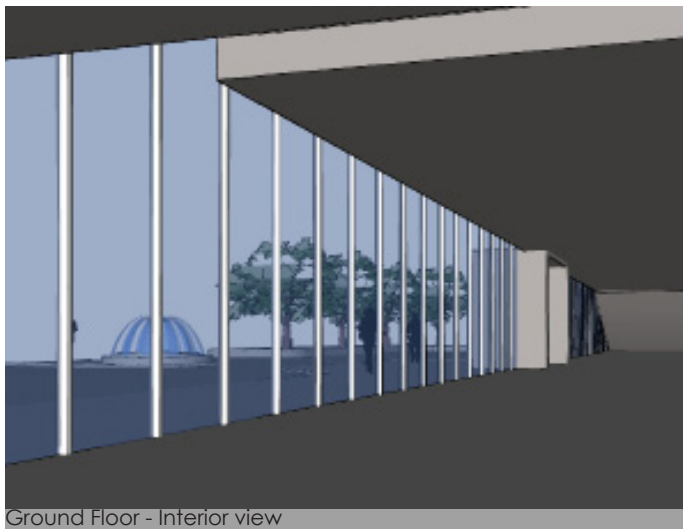
Top view



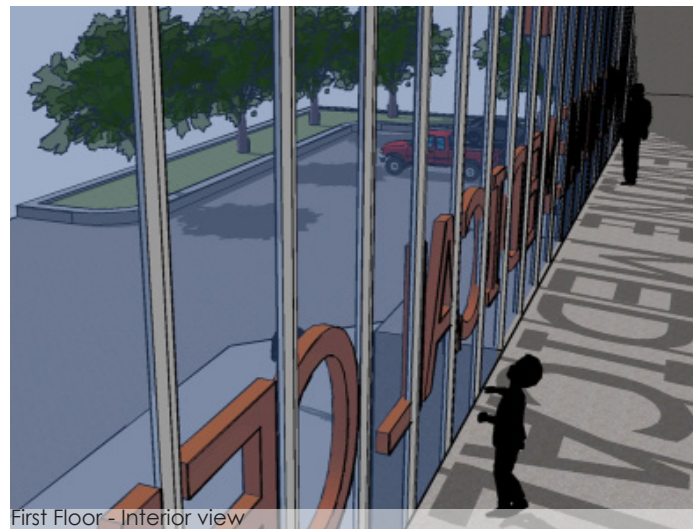
Front Entrance - Side view



First Floor - Interior view



Ground Floor - Interior view



First Floor - Interior view

Office address:  
**Delfseplein 36 | unit 1.03**  
**3013AA Rotterdam**  
**The Netherlands**

Email:  
**info@zerologic.nl**

Phone:  
**+31 (070) 5001081**  
**+31 (0) 615626571**

© Copyright 2019 ZeroLogic - All Rights Reserved



**ZEROLOGIC**  
architecture & design