

THYSSEN KRUPP ELEVATOR AWARD 2009



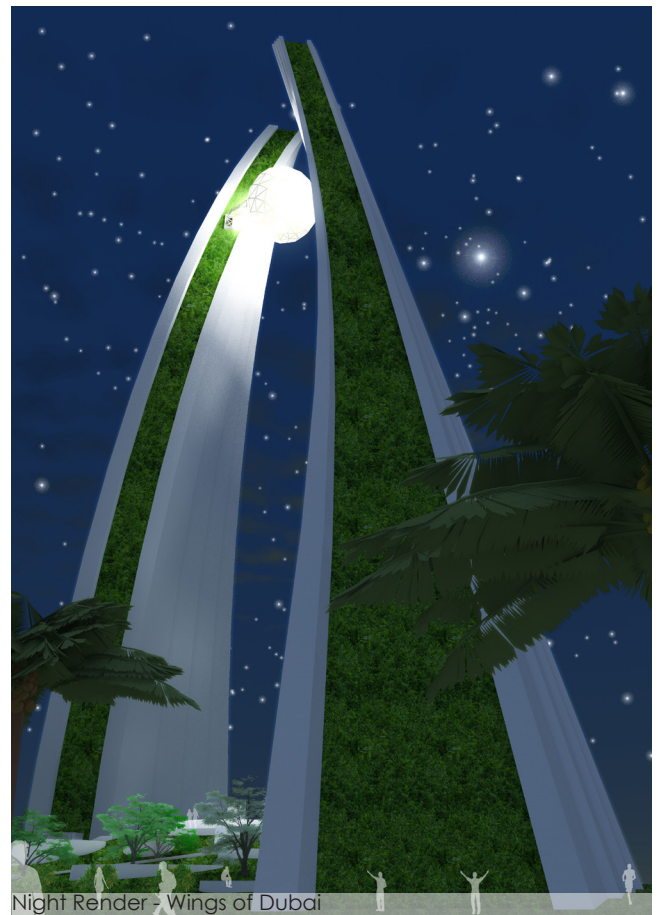
THYSSEN KRUPP ELEVATOR AWARD

Project code: ZL007
Project name: Thyssen Krupp Elevator award
Location: Dubai, UAE
Period: 2009
Status: Competition

The Wings of Dubai is a competition design that attempts to answer the design criteria set for the tall emblem structure for the new and future face of Dubai. The main design driver behind the concept is the relation of the emblem structure to Dubai, its history and its future.

Each wing has two slabs with a thickness of 2000mm decreasing to 500mm. The spacing between the slabs is 6m and it will provide the space for the elevators, emergency/maintenance stairs and the green walls. Both wings are identical in shape but placed in opposite directions from each other.

The Pearl is the observation deck of the structure, its form referring to the past while its view is looking at the current and the future.



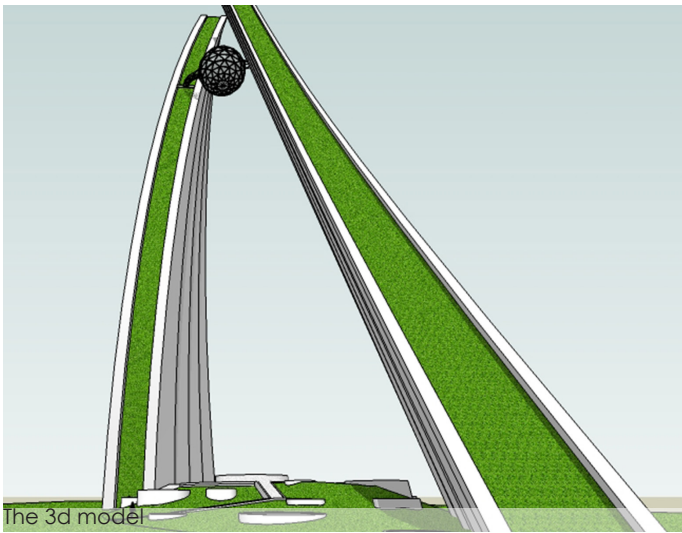
Night Render - Wings of Dubai

Office address:
Delfseplein 36 | unit 1.03
3013AA Rotterdam
The Netherlands

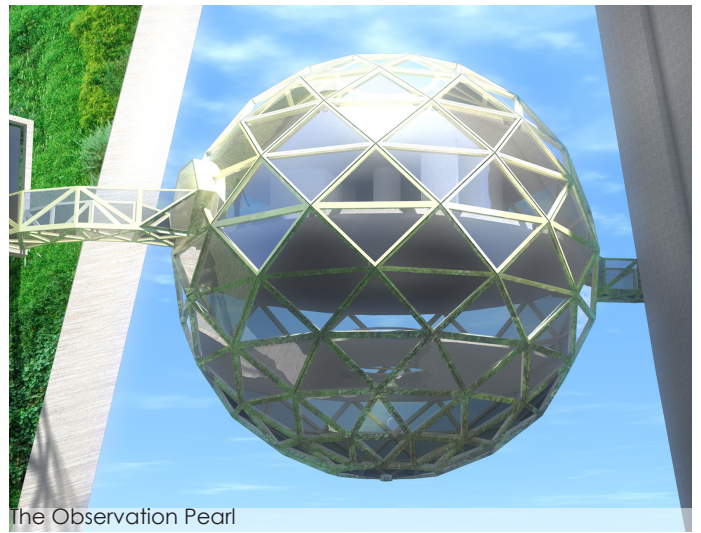
Email:
info@zerologic.nl

Phone:
+31 (070) 5001081
+31 (0) 615626571

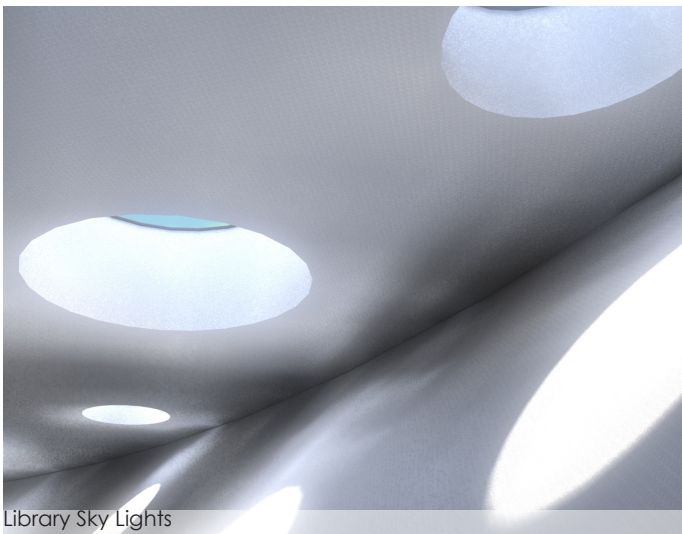




The 3d model



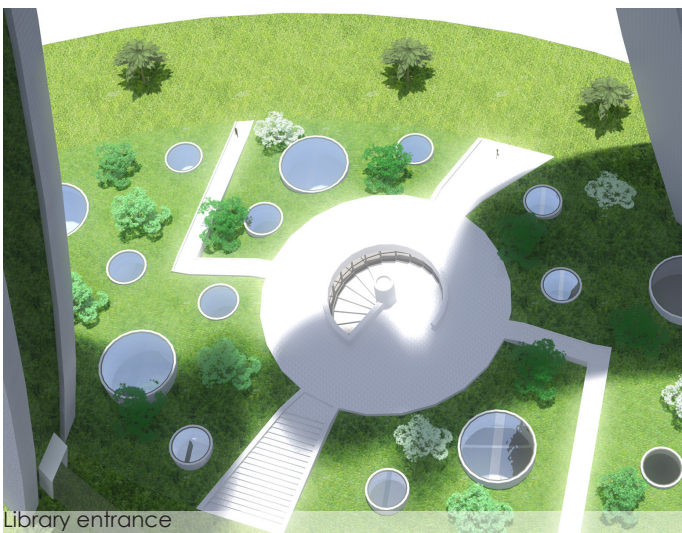
The Observation Pearl



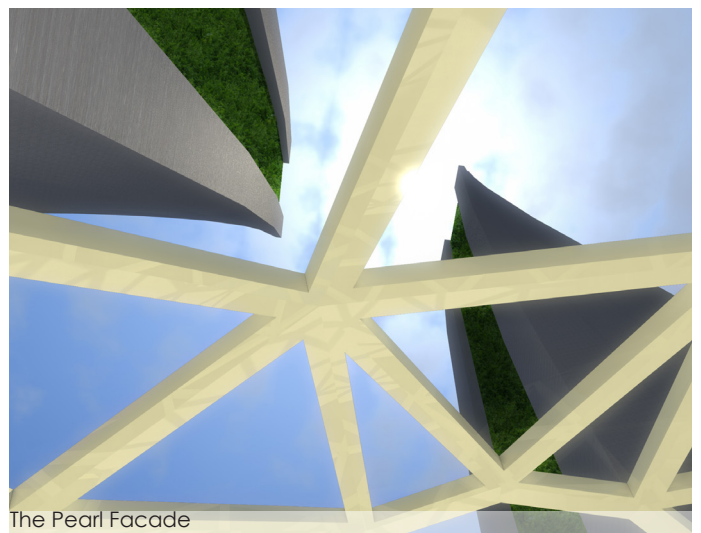
Library Sky Lights



Plot top view



Library entrance



The Pearl Facade

Office address:
Delfseplein 36 | unit 1.03
3013AA Rotterdam
The Netherlands

Email:
info@zerologic.nl

Phone:
+31 (070) 5001081
+31 (0) 615626571

© Copyright 2019 ZeroLogic - All Rights Reserved

